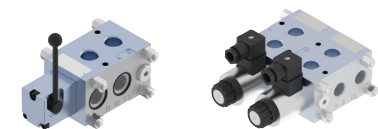
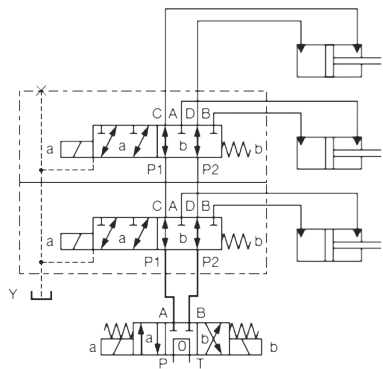


DIRECTIONAL CONTROL VALVES
6-WAY, ELECTRICALLY OPERATED

STACKABLE SECTIONAL 6-WAY VALVES



	6/2UREM6, 6/2URMM6	6/2UREM
WN	6	10
P _{max}	35 MPa	35 MPa
Q _{max}	50 dm³/min	80 dm³/min



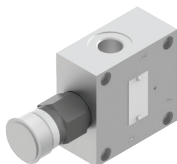
FLOW CONTROL VALVES
3-WAY FLOW CONTROLLERS



	UDUD	
WN	6	10
P _{max}	35 MPa	31,5 MPa
Q _{max}	25 dm³/min	90 dm³/min



	WDUD	
WN	6	10
P _{max}	25 MPa	25 MPa
Q _{max}	25 dm³/min	90 dm³/min

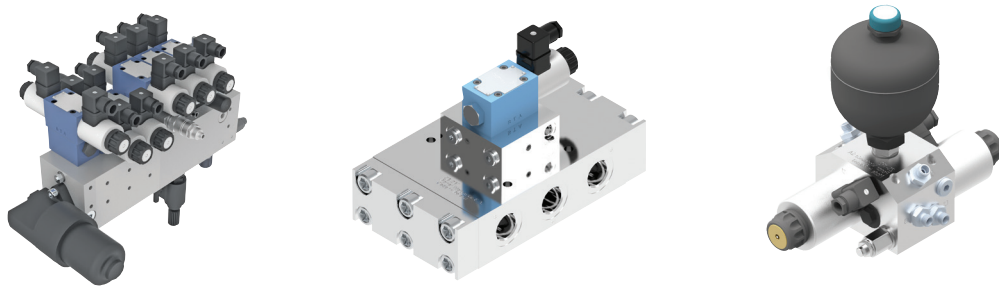


	UDUE10	
WN	10	
P _{max}	35 MPa	
Q _{max}	50 dm³/min	

3-way flow controller type UDUD (manual control) and WDUD (electrical control) is used for stepless adjustment of the flow rate of oil in a system, independently from the supply pressure. A unique feature of the valve is the possibility of using both streams – the priority one and residual, for supplying the receivers.

The controller UDUE10 thanks to integral check valve allows for oil flow from the priority channel back to the supply – indispensable e.g. in bidirectional control of rotation of a motor. The supply (port P) is divided between the priority stream to the port A and residual stream through port B to the drain or a receiver.

SPECIAL BLOCKS



We offer dedicated solutions for particular hydraulic systems or even specific types of machines. These products can be developed based on the documentation provided by the Customer, or designed by our engineers.

Typical applications include: gritters, sweepers, snow ploughs, garbage trucks, garbage utilisation presses, front loaders, seeders and planters, bale wrappers.



POWER OF PRECISION

We are a comprehensive and reliable partner in designing, production and servicing of oil hydraulic elements and systems. We hold a **Certificate of Quality Management System ISO 9001:2015**, **Certificate of Environment Management ISO 14001:2015**,

certificates for intrinsically safe products (ATEX), certificates for special productions: **AQAP, NCAGE, concession MSWiA**. Our products are also compliant with **Pressure Directive** and **Transport Directive**, for application in many areas of industry.

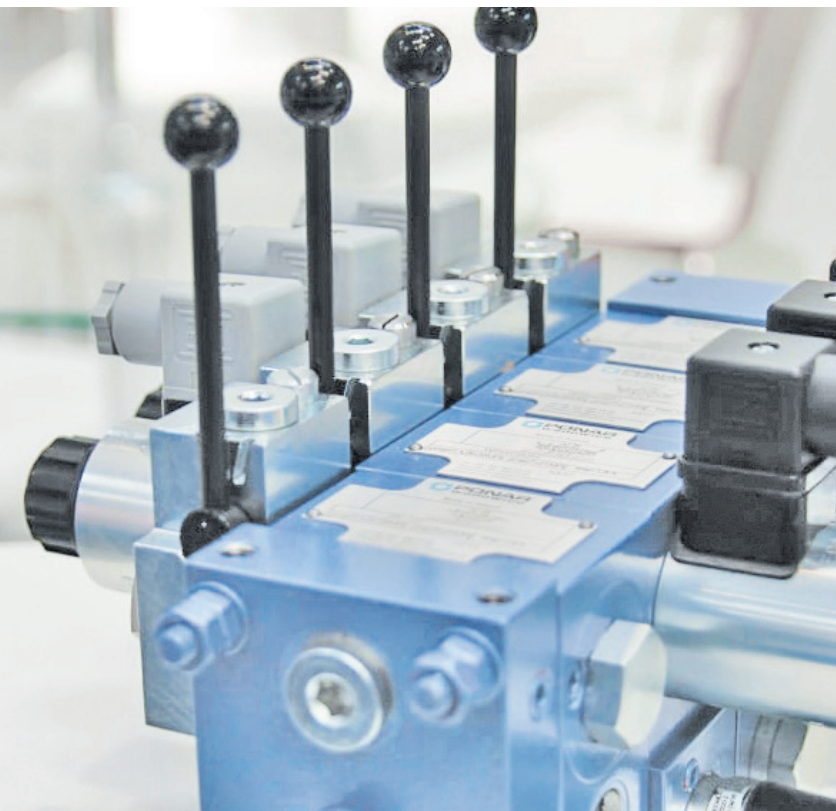
WE ARE IN EACH MAJOR INDUSTRY

PONAR Wadowice S.A. is a strong Polish brand, providing reliable solutions for the industry. We are everywhere: from aviation to shipbuilding, from mining to power industry.

We offer a full range of services: from design, assembly, technical examination to final product. Our solutions feature high quality and reliability of operation.

Our offer includes also special product groups intended for non-standard applications, i.e. in areas exposed to a risk of explosion and for low temperatures.

The quality of our products, short terms of completion, adjusted to individual Customer's expectations are the major advantages of our offer.



MOBILE
HYDRAULICS
ELEMENTS

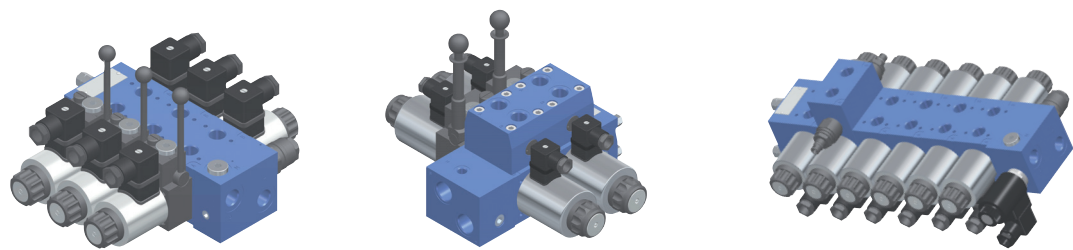
PONAR WADOWICE S.A.
ul. Wojska Polskiego 29
34-100 Wadowice
tel. +48 33 488 21 00
www.ponar-wadowice.pl

EXPORT DEPARTMENT
tel. +48 33 488 28 20-29
e-mail: export@ponar-wadowice.pl

www.ponar.pl

DIRECTIONAL CONTROL VALES
ELECTRICALLY OPERATED - ON/OFF

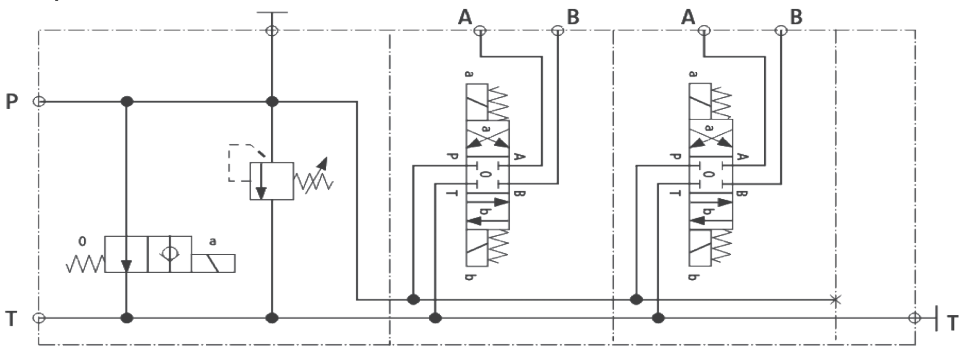
4-WAY SECTIONAL VALVES TYPE UREM



Our **4/3UREM6** valves cover a wide range of applications in communal, agricultural and building machines. They are used for controlling receivers, e.g. hydraulic cylinders, motors.

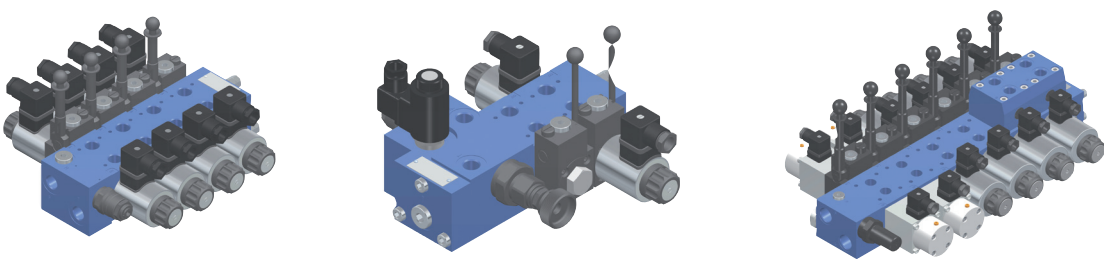
Modular design makes it possible to expand the valve up to 8 working sections. Inlet plates can be equipped with a relief valve, unloading valve, a 3-way flow controller manually or electrically operated (proportional).

4/3 UREM		
WN	6	10
P _{max}	35 MPa 21 at port T	35 MPa 21 at port T
Q _{max}	50 dm³/min	80 dm³/min



DIRECTIONAL CONTROL VALVES
ELECTRICALLY OPERATED, PROPORTIONAL

4-WAY SECTIONAL VALVES TYPE WREM

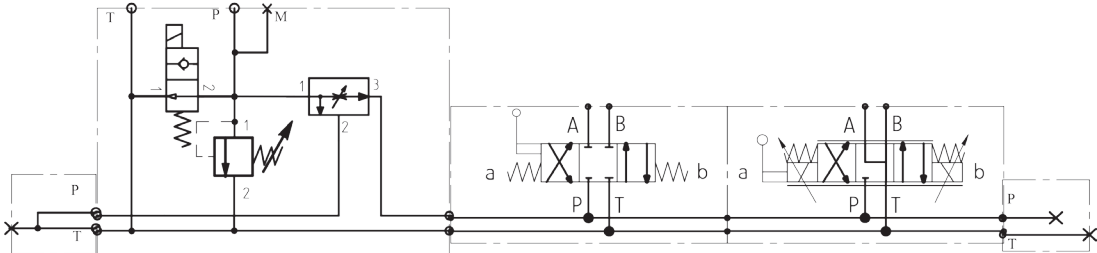


4/3 WREM		
WN	6	10
P _{max}	35 MPa	35 MPa
Q _{max}	50 dm³/min	80 dm³/min

Directional control valves **4/3 WREM** are proportional versions of **4/3 UREM** valves. They are intended for stepless control of the receiver motion.

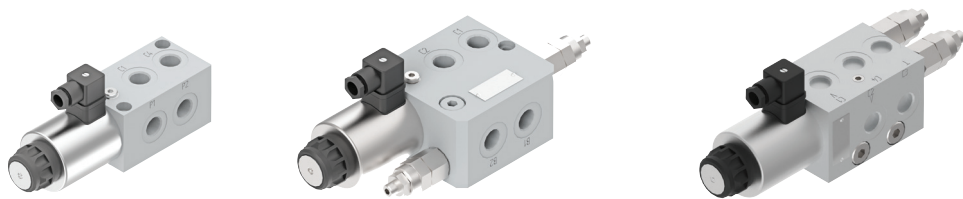
The size of hydraulic oil flow directed to the receiver is controlled by changing the current supplying the coil of the electromagnet.

Similarly to the **UREM** version, they are suitable for stackable mounting in any position in a hydraulic system. Intended mainly for mobile applications.



DIRECTIONAL CONTROL VALVES
6-WAY, ELECTRICALLY OPERATED

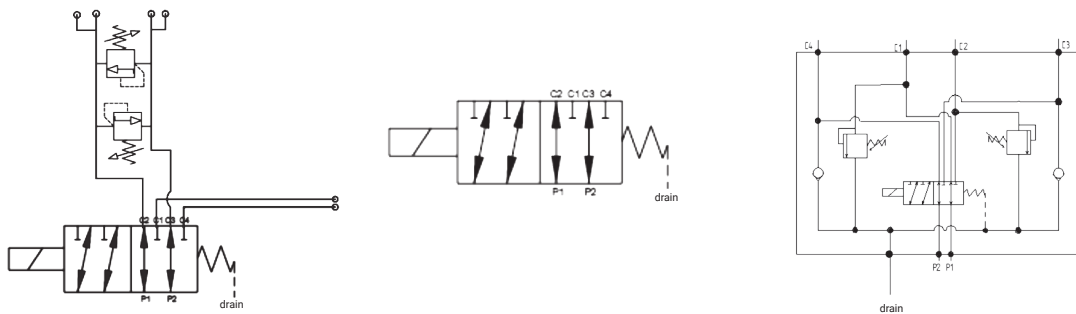
6-WAY SECTIONAL VALVES TYPE 6UREE



STANDARD VERSION (NO VALVES)		
WN	6	10
P _{max}	35 MPa	35 MPa
Q _{max}	55 dm³/min	85 dm³/min

WITH A CROSS-OVER RELIEF VALVES		
WN	6	10
P _{max}	35 MPa	35 MPa
Q _{max}	55 dm³/min	85 dm³/min

WITH A PRESSURE RELIEF/CHECK VALVES	
WN	10
P _{max}	35 MPa
Q _{max}	85 dm³/min



Electrically controlled directional control valves with pressure relief cross-over valves type **6UREE, 6/2UREM** are used for changing direction of oil flow. They allow for switching the supply between the main line and additional receivers, without a necessity of expanding

the main valve. They are available in sizes 6 and 10, in various construction versions: with pressure relief valves mounted in a cross-system, with additional electro-valves initiating other functions, with a possibility of stackable mounting – up to 5 sections.

