

ULTRA  
HIGH  
PRESSURE  
SYSTEMS



PONAR Wadowice brand



# CONTENTS

<b>BRAND OF PONAR PRESSURE</b>	5
<b>ULTRA-HIGH PRESSURE SYSTEMS</b>	6
<b>ADVANCED PREDICT, CONTROL AND MONITORING SYSTEM</b>	11
<b>MANIPULATORS SUPPORTING CLEANING</b>	14
<b>HP AND UHP ACCESSORIES: SPARE PARTS AND I PROTECTIVE CLOTHES</b>	20
<b>HYDRODEMOLITION AND ANTI-CORROSION OF CONCRETE</b>	21
<b>EXTRACTORS</b>	27
<b>MAINTENANCE &amp; INDIVIDUAL PROJECTS</b>	28
<b>CONTACT</b>	30



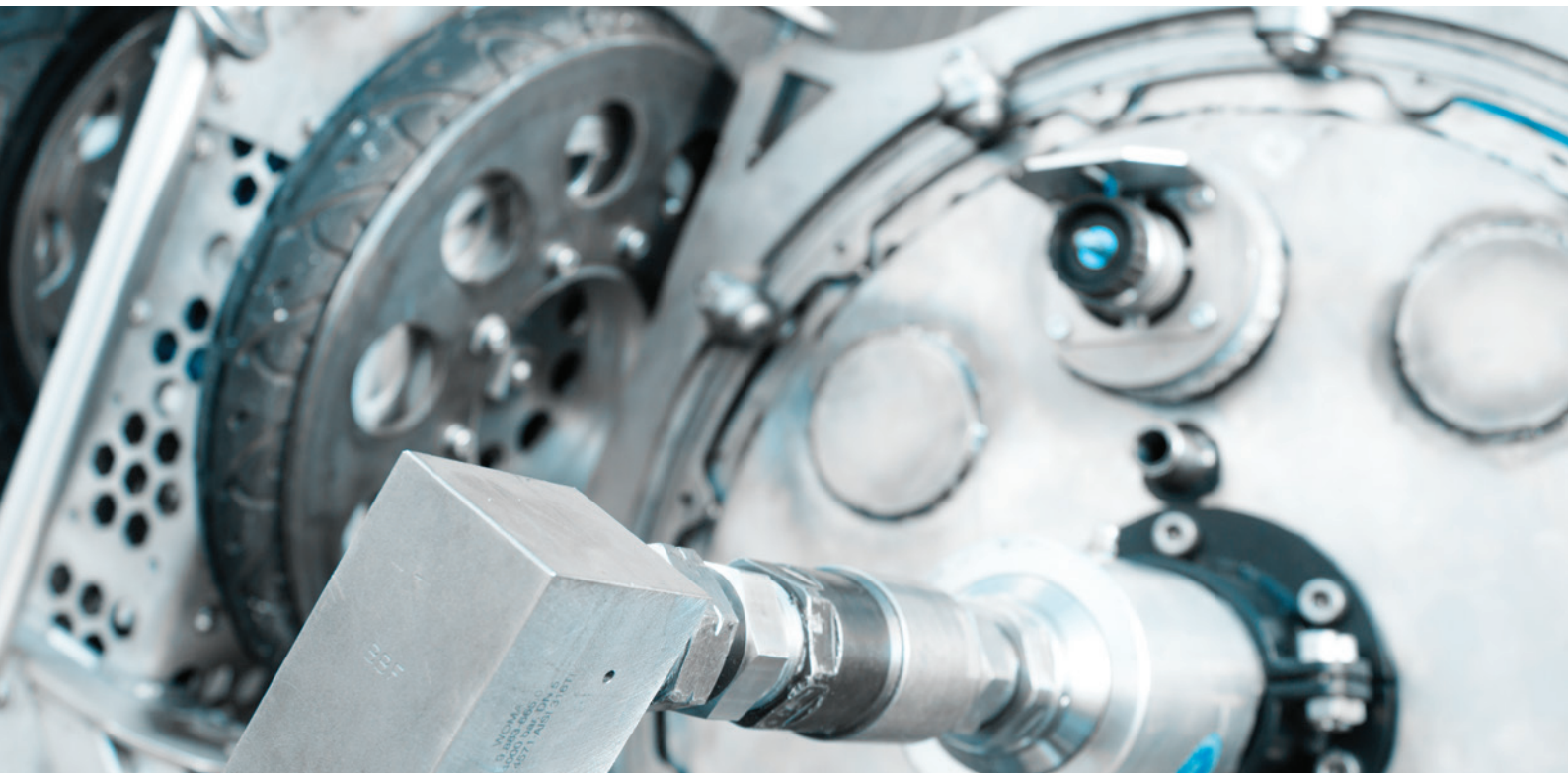
# BRAND OF PONAR PRESSURE

PONAR Pressure is a brand of ultra-high pressure water hydraulics systems of PONAR Wadowice SA. We offer modular and individual solutions utilising ultra high pressure water technology. Our solutions are efficient, effective, customised to meet Customer's expectations and environmentally friendly.

PONAR Pressure brand stands for experience, creativity in approach towards applications of high pressure water hydraulics. Our services find a variety of applications in all industries requiring precision of work and reliability of the systems. Moreover, our systems can be used in areas exposed to a risk of explosion and *no-man entry* areas.

We are a member of the **European Water Jetting Institute**, an organisation bringing together business entities, carrying out research on using highly pressurised water in the industry.

The quality of the product is guaranteed by **PONAR Wadowice SA**, a company that for more than 50 years has been one of the largest producer of oil hydraulics elements and systems in Poland, supplying its products not only on the domestic but also on the foreign markets, cooperating with reliable Partners, the leaders in their field.





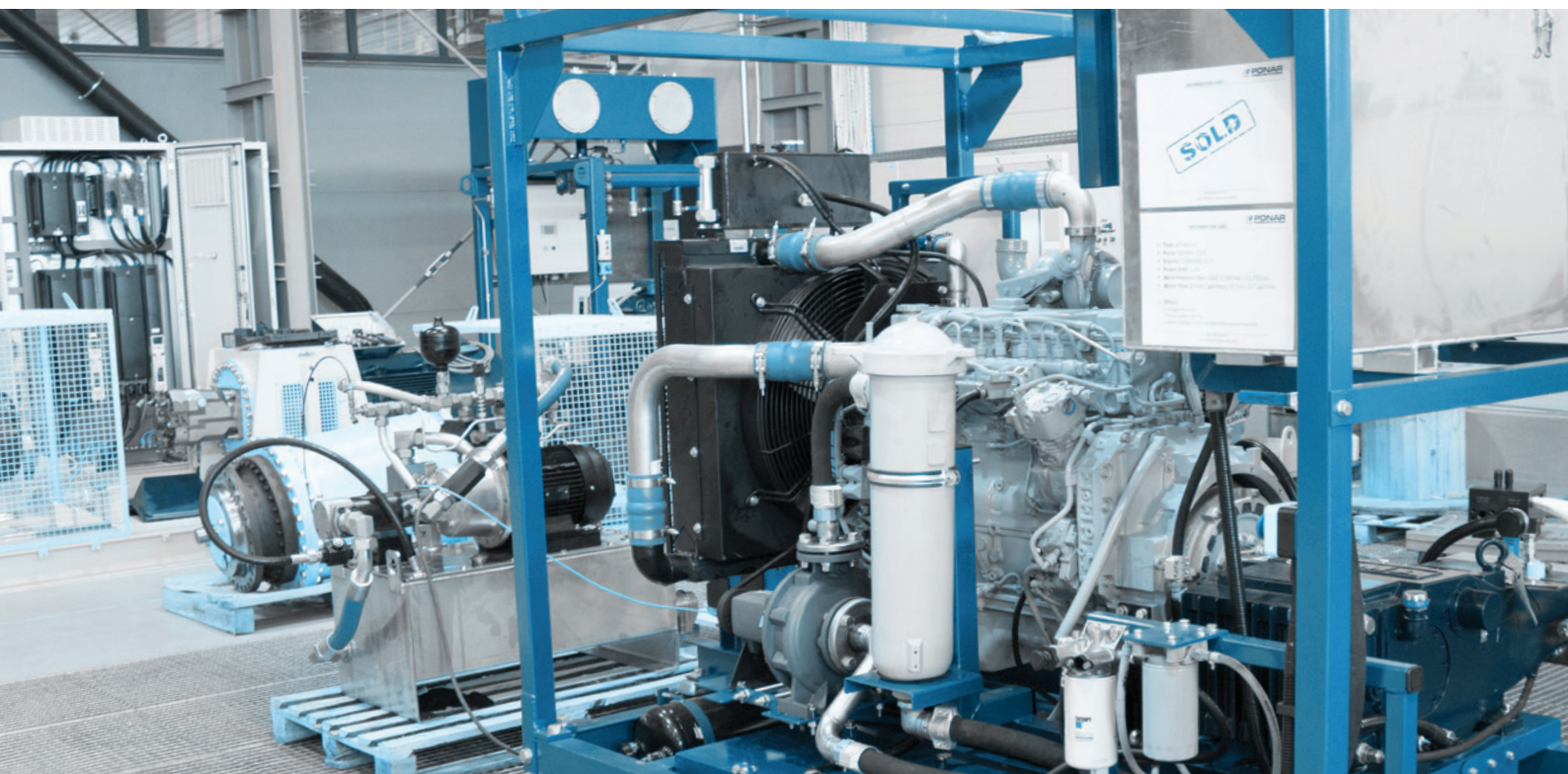
# CONSTRUCTION OF ULTRA-HIGH PRESSURE SYSTEMS

We offer a complete construction of ultra-high pressure systems, including delivery of properly selected accessories, control and technical service.

The company carries out projects based on individual Customer's requirements. Thanks to that, our solutions fulfil its purpose and find applications in many different projects which require a functional expansion.

We manufacture systems in any housing, with electric or diesel engines. All applications are made with using components of the leading domestic and foreign producers. This results directly in longer lifetime of the produced devices and their many years of reliability.

The systems designed and manufactured by our company are always tested on special test rigs, which guarantees the proper functioning of all elements of the system and their material durability



# ULTRA-HIGH PRESSURE SYSTEMS

## HP PONAR JETtrolley 500/16 EL unit



**unit type:** industrial

**body type:** open, frame with metal-rubber wheels (one steering axle)

**working pressure:** up to 500 bar

**water flow:** 16 l/min

**drive:** electric (MOLL), 15 kW, 63A or 32A plug, 5 m cable

**high pressure pump:** UDOR

**control valve:** yes, mechanical

**safety valve:** yes

**standard accessories:** yes (details at the manufacturer)

**warranty:** 12 months

**delivery time:** to be confirmed

## HP PONAR JETtrolley 500/20 EL unit



**unit type:** industrial

**body type:** open, frame with metal-rubber wheels (one steering axle)

**working pressure:** up to 500 bar

**water flow:** 20 l/min

**drive:** electric (MOLL), 18,5 kW, 63A plug, 5 m cable

**high pressure pump:** UDOR

**control valve:** yes, mechanical

**safety valve:** yes

**standard accessories:** yes (details at the manufacturer)

**warranty:** 12 months

**delivery time:** to be confirmed

## HP PONAR JETtrolley 500/20 BS unit



**unit type:** industrial

**body type:** open, frame with metal-rubber wheels

**working pressure:** up to 500 bar

**water flow:** 20 l/min

**drive:** benzine engine (B&S), 31 KM

**high pressure pump:** UDOR

**control valve:** yes, mechanical

**safety valve:** yes

**standard accessories:** yes (details at the manufacturer)

**warranty:** 12 months

**delivery time:** to be confirmed

# ULTRA-HIGH PRESSURE SYSTEMS

## HP PONAR JETtrolley 500/30 EL unit



**unit type:** industrial

**body type:** open, frame with metal -rubber wheels (one steering axle)

**working pressure:** up to 500 bar

**water flow:** 30 l/min

**drive:** electric (MOLL), 30 kW, 63A plug, 5 m cable

**high pressure pump:** UDOR

**control valve:** yes, mechanical

**safety valve:** yes

**standard accessories:** yes (details at the manufacturer)

**warranty:** 12 months

**delivery time:** to be confirmed

## HP PONAR JETtrolley 500/30 ELF pro unit



**unit type:** industrial with inverter

**body type:** open, frame with metal -rubber wheels (one steering axle)

**working pressure:** up to 500 bar

**water flow:** 30 l/min

**drive:** electric (MOLL), 30 kW, 63A plug, 5 m cable

**high pressure pump:** UDOR

**control valve:** yes, mechanical

**safety valve:** yes

**standard accessories:** yes (details at the manufacturer)

**warranty:** 12 months

**delivery time:** to be confirmed

## HP PONAR JETtrolley 1000/15 EL unit



**unit type:** industrial

**body type:** close, frame with metal -rubber wheels (one steering axle)

**working pressure:** up to 1000 bar

**water flow:** 15 l/min

**drive:** electric (MOLL), 30 kW, 63A plug, 5 m cable

**high pressure pump:** UDOR

**control valve:** yes, mechanical

**safety valve:** yes

**standard accessories:** yes (details at the manufacturer)

**warranty:** 12 months

**delivery time:** to be confirmed



# ULTRA-HIGH PRESSURE SYSTEMS

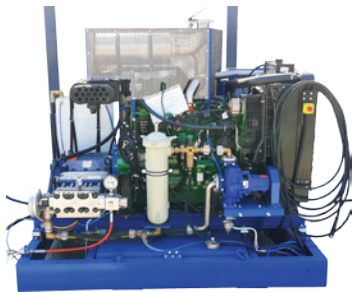
## HP PONAR JETbase 1500/60 D unit



**unit type:** industrial  
**body type:** open  
**working pressure:** up to 1500 bar  
**water flow:** 60 l/min  
**drive:** combustion/diesel, 185 kW

**high pressure pump:** plunger  
**control valve:** yes  
**safety valve:** yes  
**standard accessories:** yes (details at the manufacturer)  
**warranty:** 12 months  
**delivery time:** to be confirmed

## HP PONAR JETbase 2500/30 D unit



**unit type:** industrial  
**body type:** open  
**working pressure:** up to 2500 bar  
**water flow:** 30 l/min  
**drive:** combustion/diesel, 159 kW

**high pressure pump:** plunger  
**control valve:** yes  
**safety valve:** yes  
**standard accessories:** yes (details at the manufacturer)  
**warranty:** 12 months  
**delivery time:** to be confirmed

## installation of the unit on a trailer



We also offer high-pressure aggregates in the customer's individual configuration, with gasoline internal combustion engine or electric power supply, in stationary or mobile housing.

We would like to inform you that each aggregate can be retrofitted with basic, extended, advanced control recommended by PONAR (advanced controls equipped with the monitoring and prediction module for the technical parameters of the aggregate).

We also offer high-pressure aggregates in the customer's individual configuration, with gasoline internal combustion engine or electric power supply, in stationary or mobile housing.

We would like to inform you that each aggregate can be retrofitted with basic, extended, advanced control recommended by PONAR Wadowice (advanced controls equipped with the monitoring and prediction module for the technical parameters of the aggregate).



Aggregates: on frame, without frame, with cover, base.  
PONAR Pressure products are based on modular solutions that facilitate the flexible development of systems and manipulators. Our offer has been extended to:

- high pressure aggregates in any configuration
- manipulators supporting high pressure cleaning
- works dedicated to surface corrosion;
- robots for high pressure forging concrete
- high pressure accessories and specialist protective clothing
- high pressure equipment control and monitoring systems.



## ULTRA-HIGH PRESSURE SYSTEMS

Aggregates built on trailers.

We offer comprehensive construction of high-pressure aggregates with the delivery of properly selected accessories, control and technical service. We implement projects based on the individual needs of customers. Thanks to this, our solutions fulfil their task and are used in various projects that require functional development. We make aggregates in any building, with electric or diesel engines.



Aggregates fitted on the truck.

Optimally selected parameters of working pressure and water flow of the high-pressure strip have created a unique cleaning system. This is the first cleaning vehicle of this type in Poland, which can be found when working on sections of newly constructed roadways in the whole country.

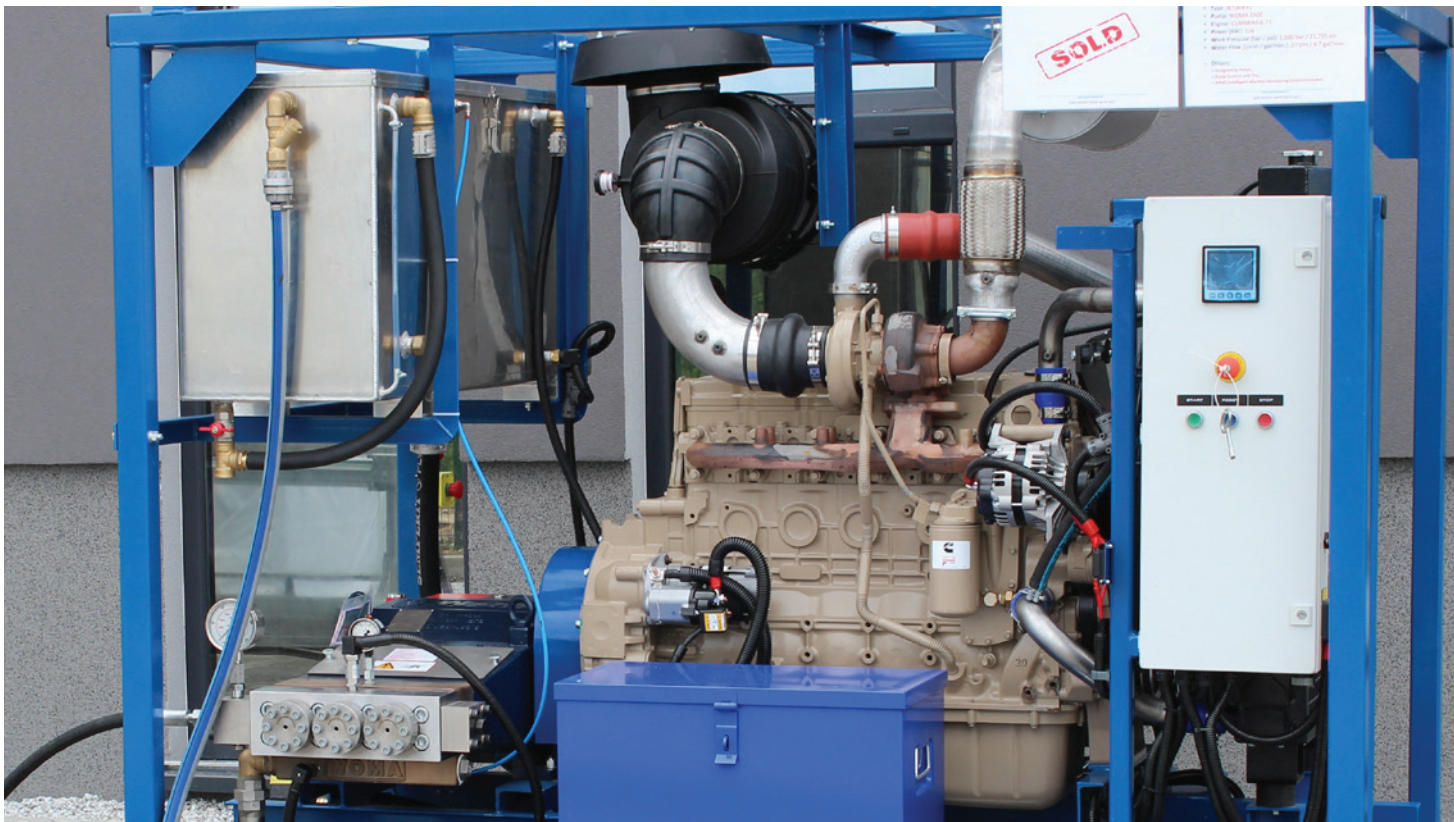
# ADVANCED PREDICT & CONTROL & MONITORING SYSTEM

We offer PONAR predict together with a system of work anomaly analysis and prediction.

These systems have:

- XL7E controller with 7 inch display or XL4E controller with 3.5 inch display
- parameter transducers allowing the PLC to properly control the operation of the aggregate and giving the user accurate operating parameters such as:
  - pump suction pressure, temperature and water level in the buffer tank,
  - air pressure controlling pneumatic valves,
  - flow measurement
- the service schedule placed in the PLC automatically reminds you of the need to maintain the device
- remote monitoring of current parameters and the ability to view historical data

An additional advantage is the ability to access data through the service, which in some cases significantly speeds up the removal of failures, and sometimes even allows its remote removal.





# ADVANCED PREDICT, CONTROL AND MONITORING SYSTEMS

## PONAR PCU<sub>basic</sub> (up to 1100 bar)



### Basic Control System for external pump unit up to 1100 bar.

- XL4E controller with 3.5-inch display
- parameter sensors allowing the PLC to properly control the operation of the aggregate,
- the service schedule placed in the PLC automatically reminds you of the need for maintenance of the device (however, the reminder function cannot be regarded as documenting the correct maintenance of the machine)

warranty: 12 months

## PONAR PCU<sub>basic</sub> (over 1100 bar)



### Basic Control System for external pump unit over 1100 bar.

- XL4E controller with 3.5-inch display
- parameter sensors allowing the PLC to properly control the operation of the aggregate,
- the service schedule placed in the PLC automatically reminds you of the need for maintenance of the device (however, the reminder function cannot be regarded as documenting the correct maintenance of the machine)

warranty: 12 months

## PONAR PCU<sub>pro</sub> (up to 1100 bar)

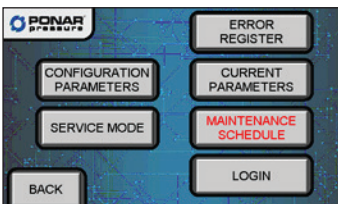


### Advanced control and monitoring systems for external pump unit up to 1100 bar.

- XL7E controller with 7 inch display
- parameter transducers allowing the PLC to properly control the operation of the aggregate and giving the user precise operating parameters of the system such as: pump suction pressure, temperature and water level in the buffer tank, air pressure controlling pneumatic valves, flow
- the service schedule placed in the PLC automatically reminds you of the need for device maintenance (the reminder function cannot be regarded as a proof of correct machine maintenance)

warranty: 12 months

## PONAR PCU<sub>pro</sub> (over 1100 bar)



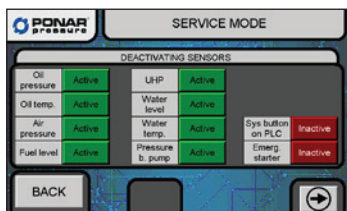
### Advanced control and monitoring systems for external pump unit over 1100 bar.

- XL7E controller with 7 inch display
- parameter transducers allowing the PLC to properly control the operation of the aggregate and giving the user precise operating parameters of the system such as: pump suction pressure, temperature and water level in the buffer tank, air pressure controlling pneumatic valves, flow
- the service schedule placed in the PLC automatically reminds you of the need for device maintenance (the reminder function cannot be regarded as a proof of correct machine maintenance)

warranty: 12 months

# ADVANCED PREDICT, CONTROL AND MONITORING SYSTEMS

## PONARpredict (up to 1100 bar)

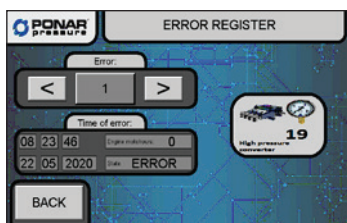


Advanced predict, control and monitoring systems for external pump unit up to 1100 bar.

- XL7E controller with 7 inch display
- parameter transducers allowing the PLC to properly control the operation of the aggregate and giving the user precise operating parameters of the system such as: pump suction pressure, temperature and water level in the buffer tank, air pressure controlling pneumatic valves, flow
- the service schedule placed in the PLC automatically reminds you of the need for device maintenance (the reminder function cannot be regarded as a proof of correct machine maintenance)
- remote monitoring of current parameters and the ability to view historical data, an additional advantage is the ability to access data through the service, which in some cases significantly speeds up the removal of failures, and sometimes even allows its remote removal

warranty: 12 months

## PONARpredict (over 1100 bar)

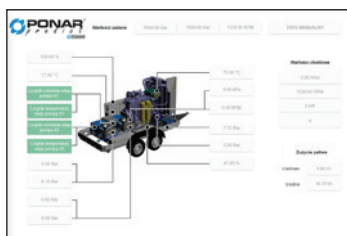


Advanced predict, control and monitoring systems for external pump unit over 1100 bar.

- XL7E controller with 7 inch display
- parameter transducers allowing the PLC to properly control the operation of the aggregate and giving the user precise operating parameters of the system such as: pump suction pressure, temperature and water level in the buffer tank, air pressure controlling pneumatic valves, flow
- the service schedule placed in the PLC automatically reminds you of the need for device maintenance (the reminder function cannot be regarded as a proof of correct machine maintenance)
- remote monitoring of current parameters and the ability to view historical data, an additional advantage is the ability to access data through the service, which in some cases significantly speeds up the removal of failures, and sometimes even allows its remote removal

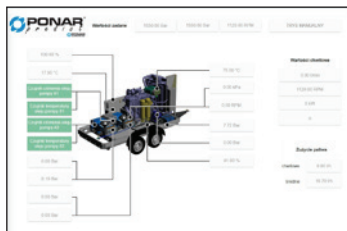
warranty: 12 months

## PONARpredict Annual on-line



Annual online access to the PONARpredict platform - remote monitoring of current parameters and the ability to view historical data, an additional advantage is the ability to access data through the service, which in some cases significantly speeds up the removal of failures, and sometimes even allows its remote removal.

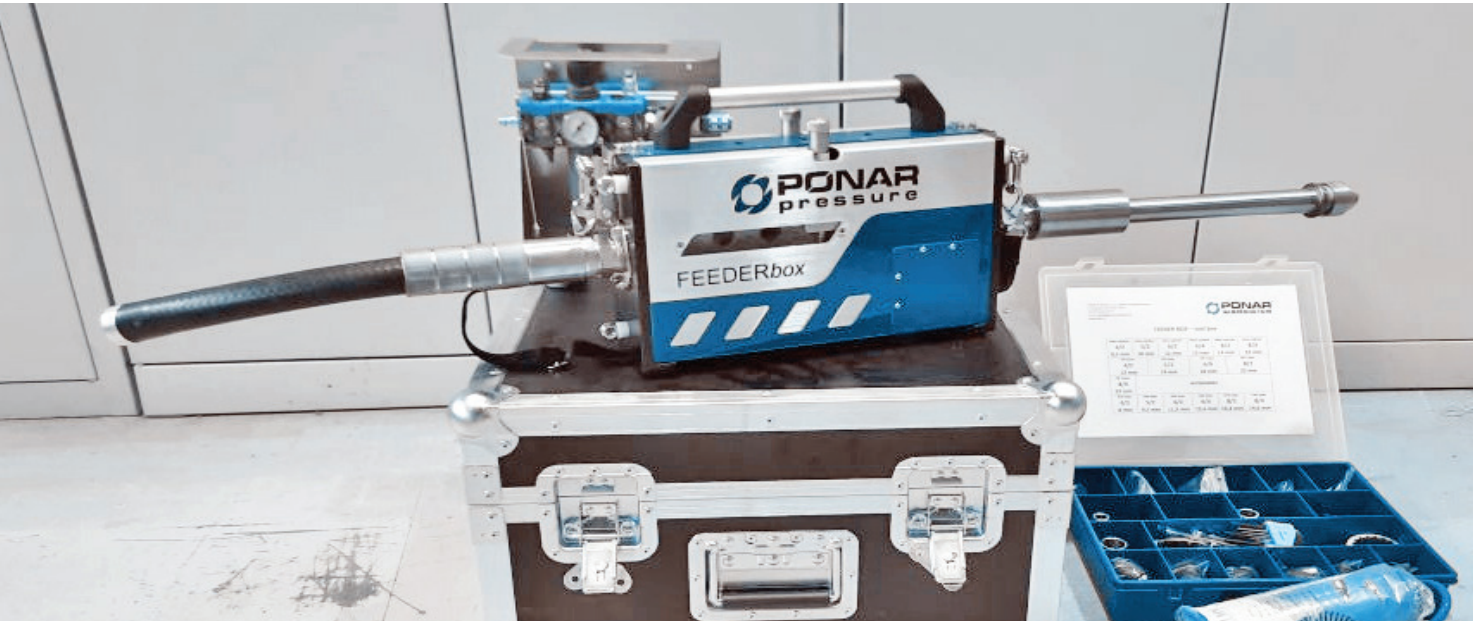
## PONARpredict Monthly on-line



Monthly on-line access to PONARpredict platform - remote monitoring of current parameters and the ability to view historical data, an additional advantage is the ability to access data through the service, which in some cases significantly speeds up the removal of failures, and sometimes even allows its remote removal.



# MANIPULATORS SUPPORTING CLEANING COMPLETE BUNDLE HEAT EXCHANGERS CLEANING SYSTEMS



**FEEDERbox is a pneumatic lance feeder (available also in electronic version) used for cleaning heat exchangers, e.g. in power plants, heat and power plants, and in petrochemical plants.**

The device allows for increase of safety, stability and efficiency of work of the operator, and also contributes to lowering the costs of the cleaning project.

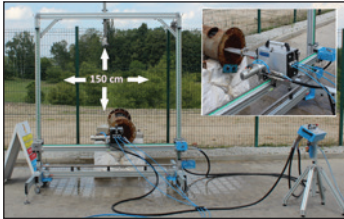
The technical parameters make it possible to increase the efficiency even up to 4 times compared to works carried out by using traditional method. The device works in a “front-rear” mode with using different lances of various external diameters, ensuring the maximum speed of work of the device.

Despite the small dimensions and weight of the feeder, the optional use of the balancer in carried out works can further improve the comfort of cleaning of industrial elements.

Modular construction of the feeder allows for easy extension of the device with another lance feeder and other solutions by PONAR Pressure. The FEEDER devices are supplied with complete set of auxiliary equipment which make it possible to use lances of various diameters and to perform works of various external diameters of pipes of heat exchangers or tubular condensers.

# MANIPULATORS SUPPORTING CLEANING

## FEEDERbox 3in1 Bundle Cleaning System STD

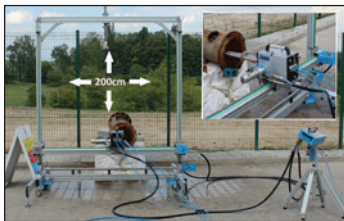


**The system includes:**

- complex automatic triple FEEDERbox 3in1 flexible lance feeder with a dedicated single pneumatic drive
- complete ALU STD frame for positioning and stabilization with special flange handle and working area 150 x 150 cm
- CP (Control Panel),
- set of keys for assembly,
- manual user instructions EN

warranty: 12 months | delivery time: to be confirmed

## FEEDERbox 3in1 Bundle Cleaning System STD+

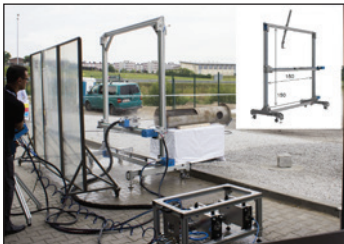


**The system includes:**

- complex automatic triple FEEDERbox 3in1 flexible lance feeder with a dedicated single pneumatic drive
- complete ALU STD+ frame for positioning and stabilization with special flange handle and working area 200 x 200 cm
- CP (Control Panel),
- set of keys for assembly,
- manual user instructions EN

warranty: 12 months | delivery time: to be confirmed

## FEEDERcombo x2 Bundle Cleaning System STD

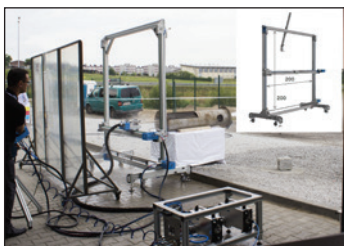


**The system includes:**

- complex automatic triple FEEDERcombo x2 flexible lance feeder with a dedicated single pneumatic drive
- complete ALU STD frame for positioning and stabilization with special flange handle and working area 150 x 150 cm
- CP (Control Panel)
- set of keys for assembly
- manual user instructions EN

warranty: 12 months | delivery time: to be confirmed

## FEEDERcombo x2 Bundle Cleaning System STD+



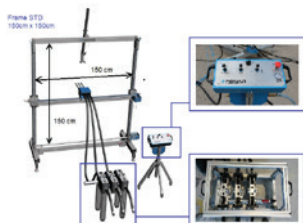
**The system includes:**

- complex automatic triple FEEDERcombo x2 flexible lance feeder with a dedicated single pneumatic drive
- complete ALU STD+ frame for positioning and stabilization with special flange handle and working area 200 x 200 cm
- CP (Control Panel),
- set of keys for assembly,
- manual user instructions EN

warranty: 12 months | delivery time: to be confirmed

# MANIPULATORS SUPPORTING CLEANING

## FEEDERcombo x3 Bundle Cleaning System STD

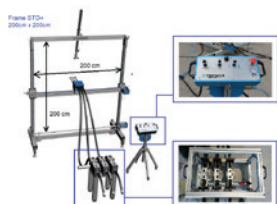


### The system includes:

- complex automatic triple FEEDERcombo x3 flexible lance feeder with a dedicated single pneumatic drive
- complete ALU STD frame for positioning and stabilization with special flange handle and working area 150 x 150 cm
- CP (Control Panel)
- set of keys for assembly,
- manual user instructions EN

warranty: 12 months | delivery time: to be confirmed

## FEEDERcombo x3 Bundle Cleaning System STD+



### The system includes:

- complex automatic triple FEEDERcombo x3 flexible lance feeder with a dedicated single pneumatic drive
- complete ALU STD+ frame for positioning and stabilization with special flange handle and working area 200 x 200 cm
- CP (Control Panel)
- set of keys for assembly
- manual user instructions EN

warranty: 12 months | delivery time: to be confirmed

## FEEDERcombo x4 Bundle Cleaning System STD



### The system includes:

- complex automatic triple FEEDERcombo x4 flexible lance feeder with a dedicated single pneumatic drive
- complete ALU STD frame for positioning and stabilization with special flange handle and working area 150 x 150 cm
- CP (Control Panel)
- set of keys for assembly
- manual user instructions EN

warranty: 12 months | delivery time: to be confirmed

## FEEDERcombo x4 Bundle Cleaning System STD+



### The system includes:

- complex automatic triple FEEDERcombo x4 flexible lance feeder with a dedicated single pneumatic drive
- complete ALU STD+ frame for positioning and stabilization with special flange handle and working area 200 x 200 cm
- CP (Control Panel)
- set of keys for assembly
- manual user instructions EN

warranty: 12 months | delivery time: to be confirmed

# THE MAIN ELEMENTS OF CLEANING SYSTEMS

## FEEDER*basic unit*



A special pneumatic device dedicated to work with a high-pressure flexible lance.

This device is designed to clean heat exchangers inside pipes. Manipulator is designed to work with various high pressure pump units. Equipped with an air preparation station FRL.

warranty: 12 months | delivery time: to be confirmed

## FEEDER*box unit*



A special device dedicated to work with the flexible HP and UHP lance.

This device is designed to clean heat exchangers inside pipes. A complete air preparation system with a compressor is required for the operation of the device (the compressor is not included). The device is ready to work with various UHP pump units. This set includes an organizer with additional accessories.

warranty: 12 months | delivery time: to be confirmed

## FEEDER*combo x2 unit*



Automatic, double flexible lance feeder installed in a central aluframe.

- mounted automatic FEEDER*combo* x2 flexible lance feeder,
- 2 x front guide tubes - 0.5 m double-guide bar,
- complete air preparation unit with a 5 m duct,
- 2 pcs. - complete sets of additional accessories for various lance diameters• set of keys for assembly,
- manual user instructions EN

warranty: 12 months | delivery time: to be confirmed

## FEEDER*combo x3 unit*



Automatic, triple flexible lance feeder installed in a central aluframe.

- mounted automatic FEEDER*combo* x3 flexible lance feeder
- 3 x front guide pipes - tri-lance guide 0.5 m
- complete air preparation unit with a 5 m duct,
- 3 pcs. - complete sets of additional accessories for various lance diameters• set of keys for assembly,
- manual user instructions EN

warranty: 12 months | delivery time: to be confirmed

# THE MAIN ELEMENTS OF CLEANING SYSTEMS

## FEEDER*combo* x4 unit

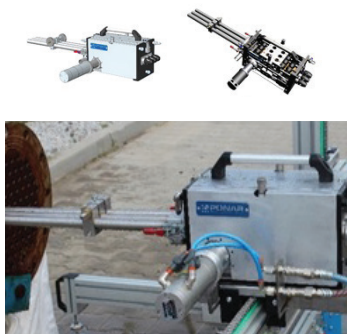


Automatic, fourfold flexible lance feeder installed in a central aluframe.

- mounted automatic FEEDER*combo* x4 flexible lance feeder
- 4 x front guide pipes - 0.5 m square guide
- complete air preparation unit with a 5 m duct
- 4 pcs. - complete sets of additional accessories for various lance diameters• set of keys for assembly, manual user instructions EN

warranty: 12 months | delivery time: to be confirmed

## FEEDER*box* 3in1 unit

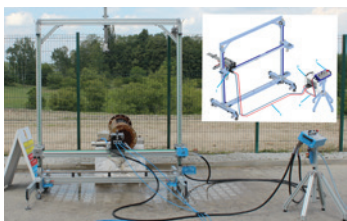


Manipulator supporting bundle heat exchangers cleaning.

- automatic triple FEEDER*box* 3in1 flexible lance feeder with a dedicated single pneumatic drive
- 3 x front guide pipes, 0.5 m
- 3 x complete sets of additional accessories for various lance diameters
- set of keys for assembly
- manual user instructions EN

warranty: 12 months | delivery time: to be confirmed

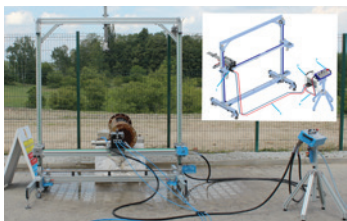
## FRAME *STD* + *CP*



- complete ALU *STD* frame for positioning and stabilization with a special flange handle
- working area: 150 x 150 cm
- remote control panel

warranty: 12 months | delivery time: to be confirmed

## FRAME *STD+* + *CP*



- complete ALU *STD+* frame for positioning and stabilization with a special flange handle
- working area: 200 x 200 cm
- remote control panel

warranty: 12 months | delivery time: to be confirmed



# THE MAIN ELEMENTS OF CLEANING SYSTEMS

## FRAME STD



- complete ALU STD frame for positioning and stabilization with a special flange handle,
- working area: 150 x 150 cm
- frame equipped with pneumatic motors for moving the selected manipulator in X and Y axes.
- has a special fixing handle fixing to the flange of a heat exchanger and a transport handle

warranty: 12 months | delivery time: to be confirmed

## FRAME STD+



- complete ALU STD+ frame for positioning and stabilization with a special flange handle
- working area: 200 x 200 cm
- frame equipped with pneumatic motors for moving the selected manipulator in X and Y axes.
- has a special fixing handle fixing to the flange of a heat exchanger and a transport handle

warranty: 12 months | delivery time: to be confirmed

## Control Panel [CP]



### Functionality:

- on/off switch
- speed switch (fast / slow)
- motion control: left/right
- movement control: up/down
- lance movement: forward/backward
- integrated safety button
- spiral pneumatic hose 5 m

warranty: 12 months | delivery time: to be confirmed

## A-FRAME



**A-FRAME** – a steel frame type „A”, intended for hanging the FEEDERbox feeder.

### Included in the set:

- elements for easy assembly of complete frame
- operation manual EN
- balancer
- Working area [m]: 1,5 x 1,5

warranty: 12 months | delivery time: to be confirmed

# HP & UHP ACCESSORIES

## SPARE PARTS | PROTECTIVE CLOTHES



### SPARE PARTS

We are a distributor of the highest class pumps and high pressure accessories. We offer service and sale of components and accessories. The protective clothing line we offer is a guarantee of safety and comfort when working with devices using UHP.

We own a modern machinery park, constantly upgraded and supplied with cutting-edge machines. Thanks to this, our Customers can count on us producing high quality elements and short time of performance of the order.

Extensive experience and equipment of our Quality Control Department allow for a quick and effective monitoring of parameters and dimensions of the details produced in our company. Our products undergo detailed control at each stage of production. Thanks to this, we can achieve the highest quality, trusted by the leading companies in the country and abroad.



### PROTECTIVE CLOTHES

We are a distributor of high-class products of the Swedish company TST, a producer of protective clothing for working with ultra-high pressure water systems.

We offer cooling vests and a wide selection of protective clothes: jackets, overall suits, etc. All clothes are available in many sizes and were made of durable materials which guarantee long use of our products.

Our line of special clothing is a guarantee of safety and comfort of work with ultra-high pressure devices.



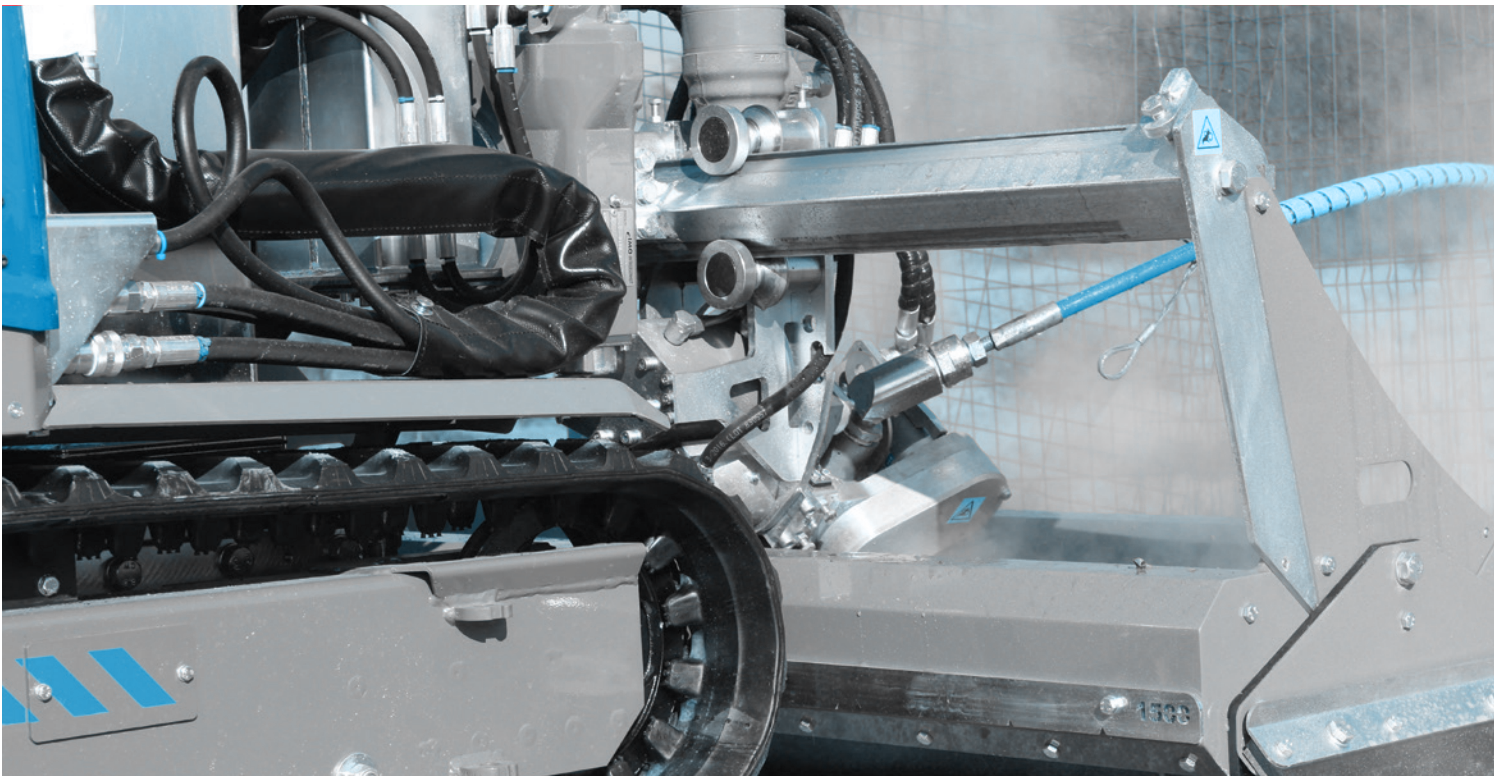
# HYDRODEMOLITION AND ANTI-CORROSION OF CONCRETE

We are an Authorised Partner of Aquajet Systems AB, a Swedish producer of machinery for concrete chiselling, world leader in production of hydrodemolition robots.

Our solution:

- does not introduce vibrations
- does not emit dust to the environment
- does not affect the reinforcement of the concrete
- has anti-corrosive and cleaning effect on the reinforcement
- limits noise emitted to the environment
- allows for selective or non-selective removal of concrete, depending on the applied pressure
- leaves clean surface of concrete
- is save and more efficient than traditional methods of concrete removal.

As one of the very few companies in Poland, PONAR Wadowice have a complete system for concrete chiselling (dedicated UHP system + Aqua Cutter 410A robot), which we offer for sale and rent including services of the operator during the carried out work.



# HYDRODEMOLITION AND ANTI-CORROSION OF CONCRETE

## AQUA CUTTER 410A evolution 2.0



**total weight:** 1190 kg  
**length:** 2,1 m  
**min. width:** 0,78 m  
**track width:** 0,78 - 1,16 m  
**min. height:** 0,99 m \ 1,07 m  
**operating height:** 3 m  
**side reach:** 1,3 m  
**lance angle:** ± 45°

**working width:** 0 - 1,7 m  
**working width extended:** 0 - 3,2 m  
**drive source:** electric motor 3 phase 5,5 kW 400 VAC 16A (other on request)  
**warranty:** 12 months  
**delivery time:** to be confirmed

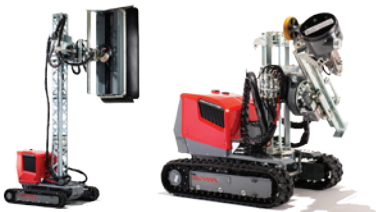
## AQUA CUTTER 410A TK evolution 2.0



**total weight:** 1160 kg  
**length:** 2,0 m  
**min. width:** 0,78 m  
**track width:** 0,78 - 1,16 m  
**min. height:** 0,99 m  
**operating height:** 4 m  
**operating diameter:** 1,3 - 3,0 m

**vacuum connections:** 2 x 2,5 "BSP  
**diameter nozzle head:** 250 mm (9,8")  
**flow and pressure:** 170 - 65 l/min at 800 - 2500 bar  
**warranty:** 12 months  
**delivery time:** to be confirmed

## AQUA CUTTER 410V evolution 2.0



**total weight:** 1250 kg  
**length:** 2,1 - 2,27 m  
**min. width:** 0,78 m  
**track width:** 0,78 - 1,16 m  
**min. height:** 0,99 m  
**operating height:** 4 m  
**side reach:** 0,95 m  
**lance angle:** ± 45°

**working width:** 0 - 1,7 m  
**working width extended:** 0-3,2 m  
**drive source:** electric motor 3 phase 5,5 kW 400 VAC 16A (other on request)  
**warranty:** 12 months  
**delivery time:** to be confirmed

## AQUA CUTTER 710H evolution 2.0



**total weight:** 2000 kg  
**length:** 2,57 - 2,82 m  
**min. width:** 2 m  
**track width:** 1,03 - 1,63 m  
**min. height:** 1,3 m  
**lance angle:** ± 45°

**working width:** 0 - 2,45 m  
**working width extended:** 0 - 4,45 m  
**drive source:** diesel engine (electric option)  
**warranty:** 12 months  
**delivery time:** to be confirmed

# HYDRODEMOLITION AND ANTI-CORROSION OF CONCRETE

## AQUA CUTTER 710V evolution 2.0



**total weight:** 2350 kg  
**length:** 2,57 - 2,82 m  
**min. width:** 1,03 m  
**track width:** 1,03 - 1,63 m  
**min. height:** 1,3 m \ 1,6 m  
**operating height:** 7 m  
**side reach:** 2 m  
**lance angle:** ± 45°

**working width:** 0 - 2,45 m  
**warranty:** 12 months  
**delivery time:** to be confirmed

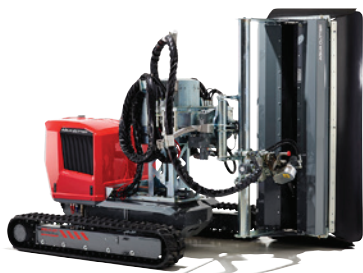
## AQUA CUTTER 710VE evolution 2.0



**total weight:** 2350 kg  
**length:** 2,57 - 2,82 m  
**min. width:** 1,03 m  
**track width:** 1,03 - 1,63 m  
**min. height:** 1,3 m \ 1,6 m  
**operating height:** 7 m  
**side reach:** 2 m  
**lance angle:** ± 45°

**working width:** 0 - 2,45 m  
**warranty:** 12 months  
**delivery time:** to be confirmed

## AQUA CUTTER 710V XL evolution 2.0



**total weight:** 2430 kg  
**length:** 2,57 - 2,82 m  
**min. width:** 1,23 m  
**track width:** 1,23 - 1,83 m  
**min. height:** 1,3/1,6 m  
**operating height:** 7 m  
**side reach:** 2 m  
**lance angle:** ± 45°

**working width:** 0 - 2,45 m  
**warranty:** 12 months  
**delivery time:** to be confirmed

## AQUA FRAME type I (without PCM)



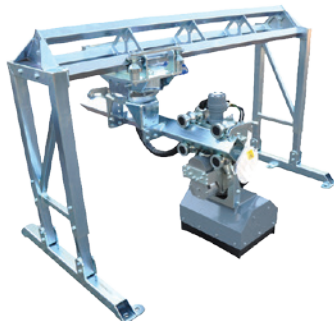
**approx. length:** 3,3 m  
**approx. width:** 2,9 m  
**cutting length:** 0 - 2,8 m  
**cutting width:** 0 - 2,25 m  
**control source:** AQUA CUTTER robot lub PCU

**warranty:** 12 months  
**delivery time:** to be confirmed



# HYDRODEMOLITION AND ANTI-CORROSION OF CONCRETE

## AQUA SPINE type I (without PCM)



**approx. length:** 1,0 - 6,0 m  
**approx. width:** 1,0 - 3,0 m  
**cutting length:** 1,0 - 6,0 m  
**control source:** AQUA CUTTER robot or PCU

**warranty:** 12 months  
**delivery time:** to be confirmed

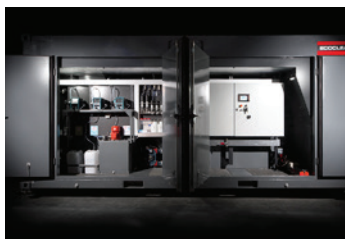
## Power Control Module (PCM)



**PCM position:** backward/forward  
**brakes:** front wheels  
**steering:** front wheels  
**weight:** 70 kg

**warranty:** 12 months  
**delivery time:** to be confirmed

## ECO CLEAR 20 2.0



**capacity:** 20 m<sup>3</sup>/h (pH outgoing water: 6-9)  
**turbidity outgoing water:** 20 - 40 mg/l  
**pH adjusters:** carbon dioxide (CO<sub>2</sub>)  
**poly aluminium chloride consumption:** 10 -30 g/m<sup>3</sup>  
**flocculant consumption:** 1,5 -3,0 g/m<sup>3</sup>  
**CO<sub>2</sub> consumption:** 0,2 - 0,6 kg/m<sup>3</sup>

**length (L1):** 6058 m (ISO 20`)  
**width (W1):** 2438 m (ISO 8`)  
**height (H1):** 2591 m (ISO 8,5`)  
**weight:** 8900 kg  
**warranty:** 12 months  
**delivery time:** to be confirmed

## Beam Extension kit 2x1m



**extension kit:** 2 x 1 m  
**extensions:** 250, 500, 750, 1000, 1500 mm  
**max. extension:** 2000 mm

**warranty:** 12 months  
**delivery time:** to be confirmed

# HYDRODEMOLITION AND ANTI-CORROSION OF CONCRETE

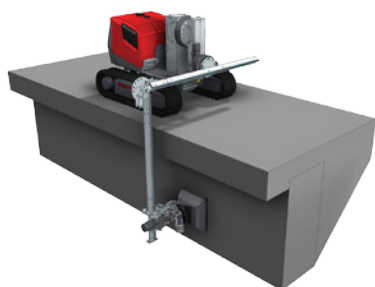
## *Beam Extension kit 2x1m with elbow*



**extension kit:** 2x1 m with elbow  
**extensions:** 250, 500, 750, 1000, 1500 mm  
**max. extension:** 2000 mm  
**bend angle:** 0°, 22,5°, 45°, 67,5°, 90°, 112,5°

**warranty:** 12 months  
**delivery time:** to be confirmed

## *Beam Extension kit LT with elbow*



**extensions:** 250, 500, 750, 1000, 1500 mm  
**max. extension:** 1500 mm  
**bend angle (elbow):** 0°, 22,5°, 45°, 67,5°, 90°, 112,5°

**warranty:** 12 months  
**delivery time:** to be confirmed

## *Circular Power Head ø1,5M*



**pillar diameter:** 0,7 - 1,2 m (2,3 - 3,9 stóp)  
**working angle:** 360°  
**oscillation:** yes  
**lance angle:** pre-set  
**compatible robots:** AQUA CUTTER 710V, AQUA CUTTER 410V, AQUA SPINE  
larger diameter is available upon request

**warranty:** 12 months  
**delivery time:** to be confirmed

## *Electro-hydraulic drive 2.0 3 phase 230V*



**length:** 530 mm  
**width:** 430 mm (620 mm over wheels)  
**height:** 1100 mm  
**wheels:** 320 x 100 mm, puncture free and oil resistant  
**weight:** 98 kg (weigh with oil: 123 kg)  
**max. hydraulic pressure:** 200 bar  
**max. flow:** 21,4 l/min at 50 Hz

**oil volume:** 25 l  
**motor power:** 4,2 kW  
**voltage:** 3 x 230 VAC at 50 Hz  
**warranty:** 12 months  
**delivery time:** to be confirmed

# HYDRODEMOLITION AND ANTI-CORROSION OF CONCRETE

## *Rotolance 1000*



**operating diameter:** 360 mm  
**max. water pressure:** 1000 bar (14 500 psi)  
**max. water flow:** 240 l/min  
**rotation speed:** 0 - 800 obr.\min (hydraulic)  
**max. hydr. pressure:** 110 bar (1595 psi)  
**max. hydr. flow:** 20 l/min

**HP hose connections:** M36 x 2 DKO  
**max. nos of nozzles:** 4  
**vacuum connections:** 2 x 2,5 "BSP  
**weight:** 110 kg  
**warranty:** 12 months  
**delivery time:** to be confirmed

## *Rotolance 2500*



**working diameter:** 350 mm  
**max. water pressure:** 2500 bar (36 300 psi)  
**max. water flow:** 65 l/min  
**rotation speed:** 0 - 1000 rpm (hydraulic)  
**max. hydr. pressure:** 110 bar (1595 psi)  
**max. hydr. flow:** 20 l/min

**HP hose connections:** M30 x 2 gland  
**max. nos of nozzles:** 20  
**vacuum connections:** 2 x 2,5 "BSP  
**weight:** 110 kg  
**warranty:** 12 months  
**delivery time:** to be confirmed

## *Rotolance 2500 LT*



**working diameter:** 215 mm  
**working diameter:** 2500 bar  
**max. water flow:** 65 l/min  
**rotation speed:** 0 - 1000 rpm (hydraulic)  
**max. hydr. pressure:** 110 bar (1595 psi)

**HP hose connections:** M30 x 2 gland  
**max. nos of nozzles:** 20  
**vacuum connections:** 2 x 2,5 "BSP  
**weight:** 95 kg  
**warranty:** 12 months  
**delivery time:** to be confirmed

# HYDRAULIC EXTRACTORS

Since 2017 we have been an authorised and sole trade partner of the Italian producer of hydraulic extractors, IDROJET company.

Our offer also includes services related to construction of extractors according to individual Customer requirements as to the length and weight of heat exchangers.

Extractors are devices intended for extracting and inserting pipe inserts of heat exchangers. They are made as a frame hung with a band to a hook of a work crane. Extractor is equipped with a hydraulic power pack with an internal combustion drive.

Additionally, the device can be equipped with an extender allowing work with inserts of greater length.

The device is remotely controlled by using a console connected by cords to the electro-hydraulic installation.



## MAINTENANCE & INDIVIDUAL PROJECTS



**PONAR Wadowice has extensive knowledge on performing cleaning of industrial installation, that is why we can help in selecting the right technology of cleaning:**

- process automation
- increasing the speed of the process
- lowering the costs of cleaning
- safety of the operators

As experienced engineering-servicing staff, PONAR Wadowice upon Customer's request provides repairs and on going servicing of most of high pressure machinery and equipment used during UHP operations.

Our professionalism and many years of experience guarantee long life of the equipment during performing commissioned works in the future.







**PONAR Wadowice S.A.**  
**Headquarters and Plant in Wadowice**

**ul. Wojska Polskiego 29**  
**34-100 Wadowice**  
**tel. +48 33 488 21 00**

**PONAR Wadowice S.A.**  
**Plant in Łaziska Górne**

**ul. Św. Jana Pawła II 10 a**  
**43-170 Łaziska Górne**  
**tel. +48 32 323 34 00**

**HIGH PRESSURE DEPARTMENT**  
**Plant in Łaziska Górne**

**tel. +48 32 323 34 58**  
**mob. +48 606 543 188**  
**mob. +48 530 955 894**  
**mob. +48 575 551 005**  
**[uhp@ponar-wadowice.pl](mailto:uhp@ponar-wadowice.pl)**