



Product Tech News

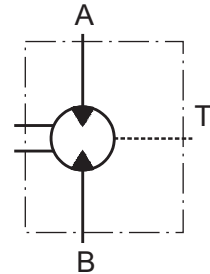
Hydraulic motors type MAP92

Heavy duty axial piston fixed displacement motor



APPLICATION

- Conveyors
- Metal working machines
- Machines for agriculture
- Road building machines
- Mining machinery
- Food industries
- Special vehicles
- Plastic and rubber machinery etc.



drain line always should be open

OPTIONS

- Swash plate
- Flange mount
- Side ports
- Shafts- splined
- High pressure ports

EXCELLENCE

- High starting torque
- Smooth low - speed operation
- Compact design
- Long service life
- High power density

SPECIFICATION DATA

Type		MAP 63	MAP 71	MAP 75	MAP 92
Displacement, cm. ³ /rev. [in. ³ /rev.]		63.58 [3.88]	71.5 [4.36]	76.84 [4.69]	93.18 [5.69]
Max. Speed, [RPM]	Cont.	3500	3500	3500	3500
	Int*	4000	4000	4000	4000
Max. Torque, Nm [lb-in]	Cont.	354 [3133]	398 [3523]	428 [3788]	514 [4549]
	Int**	425 [3762]	478 [4230]	514 [4549]	616 [5452]
Output, kW [HP]	Cont.	89 [120]	100 [134]	108 [145]	130 [174]
	Int**	129 [173]	145 [195]	156 [209]	188 [252]
Max. Pressure bar [PSI]	Cont.	350 [5080]	350 [5080]	350 [5080]	350 [5080]
	Int**	420 [6100]	420 [6100]	420 [6100]	420 [6100]
Max. Oil Flow, lpm [GPM]	Cont.	223 [58.9]	250 [66]	269 [71.1]	326 [86.1]
	Int*	255 [67.4]	286 [75.6]	308 [81.4]	373 [98.5]
Permissible shaft load daN [lb]		axial Fa=200 [450], radial on request			
Min. speed [RPM]		500			
Max. Pressure in Drain Line, bar [PSI]		5 [70]			
Weight kg [lb]		32.5 [71.7]			

* Intermittent speed (flow) is for pressure up to 150[2200] bar[PSI].

** Intermittent load: the permissible values may occur for max. 10% of every minute.

1. For continuous operations continuous the recommended output power should not be exceeded.
2. Recommended filtration is per ISO 4406 cleanliness code 18/16/13 or better. This filtration corresponds to SAE AS 4059 8A/7B/7C. A nominal filtration 10 micron or better.
3. Recommend using of a premium quality, anti-wear type mineral based hydraulic oil, HLP(DIN51524) or HM(ISO6743/4).
4. Recommended oil viscosity 15...30 cSt or less.
5. Recommended maximum system operating temperature is 180°F [82°C].
6. To ensure optimum motor life fill with fluid prior to loading and run at moderate load and speed for 10-15 minutes.

ORDER CODE

	1	2	3	4	5	6	7	8	9	10	11	12	13	14	15
M A P														/	

Pos.1 - Mounting Flange

- 4M** - ISO3019-2 4-Bolt flange of
spigot diam.140 mm [5.51 in] - BC 180 mm [7.09 in]
- C** - SAE C - 2-Bolt flange
spigot diam. 127mm [5 in] - BC 181 mm [7.125 in]

Pos.2 - Port type

- omit - Side ports on opposite sides
- T *** - Twin (Two) side ports on one side
- E *** - Rear ports

Pos.3 - Displacement code

- 63** - 63.58 cm.³/rev. [3.88 in.³/rev.]
- 71** - 71.5 cm.³/rev. [4.36 in.³/rev.]
- 75** - 76.84 cm.³/rev. [4.69 in.³/rev.]
- 92** - 93.18 cm.³/rev. [5.69 in.³/rev.]

Pos.4 - Shaft Extensions

- SW** - ø40mm [ø 1.575 in] spline, metric version
W40x2x30x18x9g DIN 5480
- SP*** - ø35mm [ø1.378 in] spline , metric version
21T Splined ANSI B92.1-1970, 16/32
- CU*** - ø40mm [ø 1.575 in] straight cylindrical, metric
- DU*** - ø40mm [ø 1.575 in] straight cylindrical, SAE ver.
- DT*** - ø38.1mm [ø 1.5 in] straight cylindrical, SAE ver.

Pos.5 - Improve radial loads

- omit - Standard bearing
- N *** - Heavy duty bearing

Pos.6 - Ports

- omit - 2xSAE 1 in, PSI6000, metric, M27x2-6H
- 2 *** - 2xG1, G1/2
- 4 *** - 2x1 5/16-12 UN Ports, 7/8-14 UNF.
- 5 *** - 2xSAE 1 in, PSI6000, 7/8-14 UNF.

Pos.7 - Shaft Seal, corrosion resistant seal surface

- omit - NBR seal type material
- V** - FKM seal type material
- C*** - Corrosion resistant bushing with NBR seal
- VC*** - Corrosion resistant bushing with FKM seal

Pos.8 - Integrated valves

- omit - none
- DR*** - Dual crossover relief Valve
- PR*** - Single crossover relief Valve
- FL*** - Flush Valve
- PU*** - Purge Valve

Pos.9 - Pressure setting of Integrated valves

- omit - none
- 250*** - 250 bars

Pos.10 - Flow setting of Integrated valves

- omit - none
- L5*** - 5 liter/min

Pos.11 - Special Features

- omit - none
- T*** - Tacho connection
- RS*** - Speed Sensor
- R2S*** - Speed Sensor Two directional

Pos.12 - Type of Speed Sensor

- omit - none
- (P)*** - PNP type of RS sensor without cable
- (N)*** - NPN type of RS sensor without cable
- (P1)*** - PNP type with cable's length 1 meter
- (P5)*** - PNP type with cable's length 5 meters
- (N1)*** - NPN type with cable's length 1 meter
- (N5)*** - NPN type with cable's length 5 meters

Pos.13 - Paint and Coating

- omit - no Paint or Coating
- P**** - Painted
- PC**** - Corrosion Protected Paint
- Ni*** - Nickle Coating
- Cr*** - Chrome Coating

Pos.14 - Special unit

- omit - none

We are open for modification upon your request.

Pos.15 - Design Series

- omit - Factory specified

*Under development

**Color at customer's request

The hydraulic motors are mangano phosphatized as standard.



SCAN QR

The information placed at your disposal
in this brochure can be changed without
any notification.
Please be sure that your copy is the newest one.

M+S HYDRAULIC

68, Kozloduy St., 6100 Kazanlak, Bulgaria
Tel.: ++359 431 65167
Fax: +359 431 64114
E-Mail: msh@ms-hydraulic.com

version 2.3